

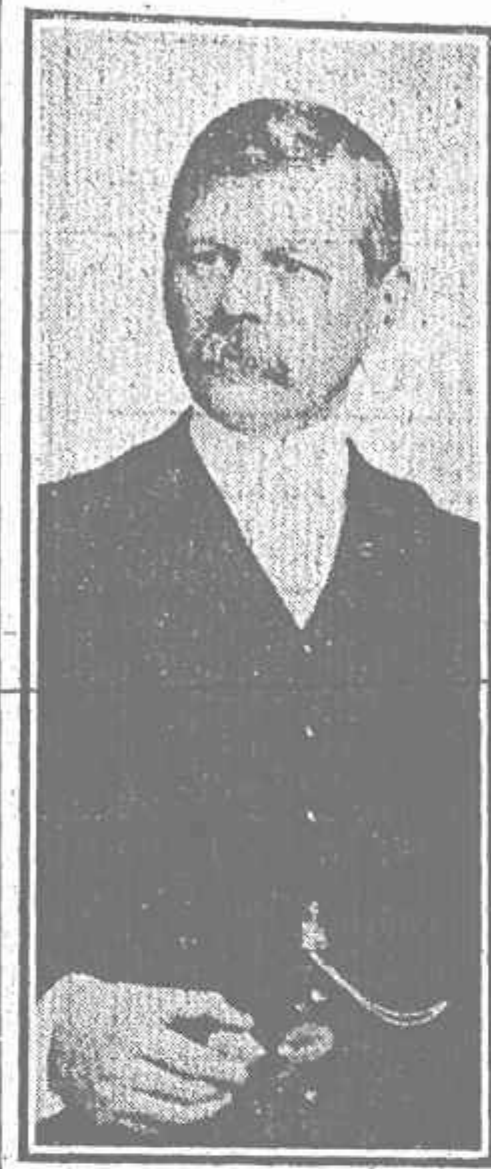
# NEW ADDING MACHINE OF BUNDY COMPANY

*Proposed Factory at Endicott Will Be Set in Beautiful Landscape Garden, and Will Manufacture New Adding Machine, Which Is Said to Surpass Anything Now on the Market. Five Hundred Men Will Eventually Be Employed*

Endicott is soon to have the largest and most beautiful factory buildings in the world devoted exclusively to the manufacture of adding machines, and plans are now nearing completion for their erection. Years of study and labor on the part of inventors employed by the Bundy Manufacturing Company has resulted in the invention of an adding machine, wonderful in its mechanism and so far superior to others in its operation that competition will be impossible, and to the manufacture of the machines the buildings will be devoted.

Three acres of land, comprising the entire square between McKinley and Roosevelt avenues, from North street to the Erie railroad, have been purchased by the Bundy company, and the work of erecting the buildings on this tract will be begun this Fall if preliminary arrangements can be made so that its completion before Winter can be insured.

The building to be erected this Fall will be 200 feet long and 40 feet wide. It will be composed of stone, cement and steel, will be absolutely fire-proof and so arranged that other buildings of equal or greater length can, without any disadvantage, be joined on in such a manner as to form a hollow square in the center. The three other buildings which will comprise the square will undoubtedly be 250 feet in length. They will be added as soon as the requirements of the factory warrant. All of these four buildings will be two stories in height. The sides and ends of all will be almost entirely of glass, consisting of metal window frames and fire-proof wire glass. The height of the windows of the upper floor will be 10 feet and of the lower floor 9 feet. The best and cost-



**HARLOW E. BUNDY,**  
Treasurer and General Manager of the Bundy Manufacturing Company.

much experimenting during which time seven distinct styles of machines were made, the Bundy Manufacturing Company has perfected the best and most practical adding machine ever made. The only adding machine which has had any measure of success, and the only one now in general use, is entirely different in principle from the Bundy, having a reciprocating motion, whereas the Bundy is purely rotary. Many things can therefore be accomplished on their machine which cannot possibly be done on any other.

In the first place their machine is stronger and more durable than any other, which is of vital importance in any machine which has such a multiplicity of parts and so finely adjusted as are adding machines.

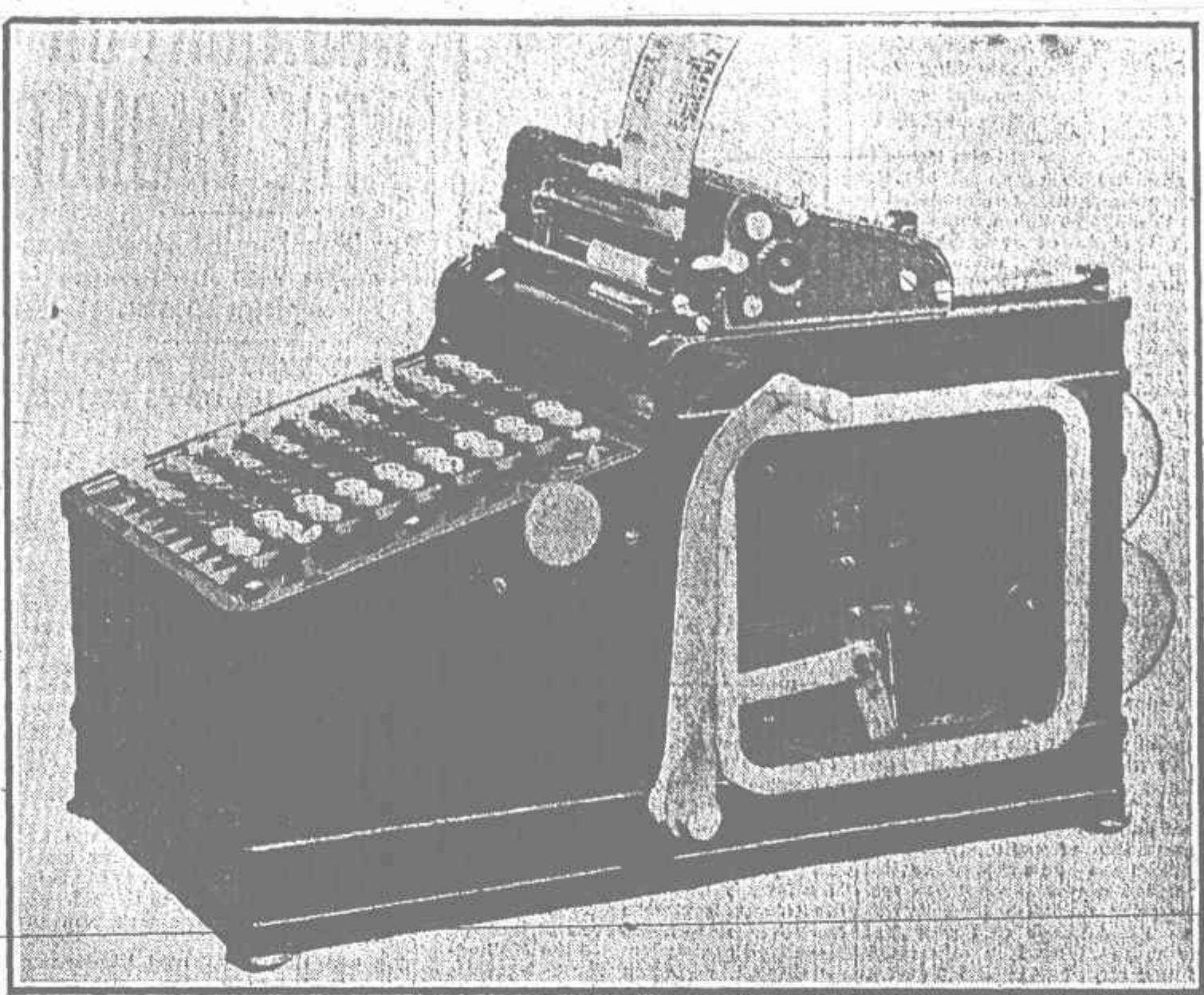
Another distinct advantage in this new machine will be the printing of a word in conjunction with each amount. A cashier of one of the banks says that this device will be

a wonderful time saver, as it will practically avoid the necessity of writing letters which now accompany statements sent to other banks correspondents. Another statement made by this cashier is that the making of a copy or duplicating the printing, which is done on no other machine, would save his bank \$1,500 a year and he says if there were no other advantages in the Bundy than that, no bank could afford to keep in use their present style of machine if it could get one that would make a copy.

**Total Easily Printed.**

Another new feature in the Bundy is the ease and simplicity of printing the total, which is printed in a different colored ink than the separate amounts. In any other machine a key must be held down and then the handle or crank is pulled over and back twice, a failure to do this in accordance with instructions gives a wrong total. In the Bundy no key is pressed down nor is the handle even touched, but simply pushing backward the carriage to a stop prints the total, always correct in red ink. The total can be forwarded to another column and total added to total, or returned to zero for the next series of figures—all within the control of the operator. The printing is in plain view of the operator and easily accessible while in any other machine the sheet is on the extreme back.

Every other adding machine has a plunger or oil chamber to limit its speed and to prevent its being damaged by too rapid operation. There are no plungers or retarding devices on the Bundy, and therefore it can be operated at nearly double the speed of any other. It also has the usual devices to lock all keys in a row other



**THE BUNDY ADDING MACHINE.**  
Wonderful Invention, Which Will Be Manufactured in Endicott.

Bundy Company and three are now pending.

The increased capitalization has been arranged, none being offered publicly for sale.

**An Extraordinary Factory.**

It is announced that the factory in which this machine will be built will be about as extraordinary as the machine itself. Three acres of land have been purchased at Endicott and fireproof buildings will soon be started. Not a particle of wood will be used in any of the buildings, and everything of the latest in machinery and equipment will be used.

During the eight years of the development and perfection of this machine the guiding spirit has been Harlow E. Bundy, the treasurer and general manager of the Bundy Manufacturing Company and its largest owner.

have resulted in its completion and perfection. The last two men to work upon it, and through whose skillful work the success of the machine is largely due, are Harry T. Goss of New York city and George L. Martin of this city.

**Coach Excursions**

To St. Louis via Erie Railroad every Wednesday during September and October; \$17.00 from Binghamton, good on Excelsior Express, the finest and fastest train to St. Louis.—Adv.

**Coach Excursions**

To St. Louis via Erie Railroad every Wednesday during September and October; \$17.00 from Binghamton, good on Excelsior Express, the finest and fastest train to St. Louis.—Adv.

**LOOP-THE-LOOP COMING.**

Binghamtonians will soon experience the sensation experienced by Diavolo, the circus man, who loops-the-loop. At the coming Binghamton exposition every man may be his own Diavolo.

In four special cars the loop-the-loop, which has been a feature at the World's Fair, is coming to town for the Fair. In this contrivance the "loopers" enter cars, are trapped in, and from an elevation of about 50 feet are sent whizzing around a track nearly 300 feet long. Before the end of the journey the cars are bottom side up and the riders' heads are hanging downward.

Entries for the races close at 11 o'clock on the night of Sept. 19. Dog show entries will close at midnight on Sept. 17.



**G. L. MARTIN,**  
Skilled Mechanic, Who Helped Perfect Bundy Adding Machine.

et machinery will be installed in the building and some of this has been ordered. Electricity will be the motive power; each machine will have separate connections and there will be no long shafts. The power will be furnished from the company's own power house, a building 40x60 feet, which will be erected at the southwest corner of the main buildings and so arranged that it can be enlarged. Gas will be manufactured by the company and this will be used for developing the power by the use of gas engines. There will be absolutely no smoke in the building. The interior will be painted white.

**Beautiful Surroundings.**

The building to be erected this Fall will be 60 or 75 feet from the Erie railroad and this ground as well as the land for 75 feet in all directions from the additions will be beautified in every possible way. Walks will be laid, flowers and shrubs planted and everything known to the landscape gardener's art done to beautify the grounds.

In the center of the hollow square there will be a fountain and around this walks and a profusion of flowers. The offices will be in a building which is to be erected southwest of the factory. Near this will be constructed a building which will be used as a restaurant for officers of the company and employees. Investigation has shown that it is possible to furnish a meal for from 8 to 11 cents. The company will do the cooking free and the employees will only have to pay for the raw material.

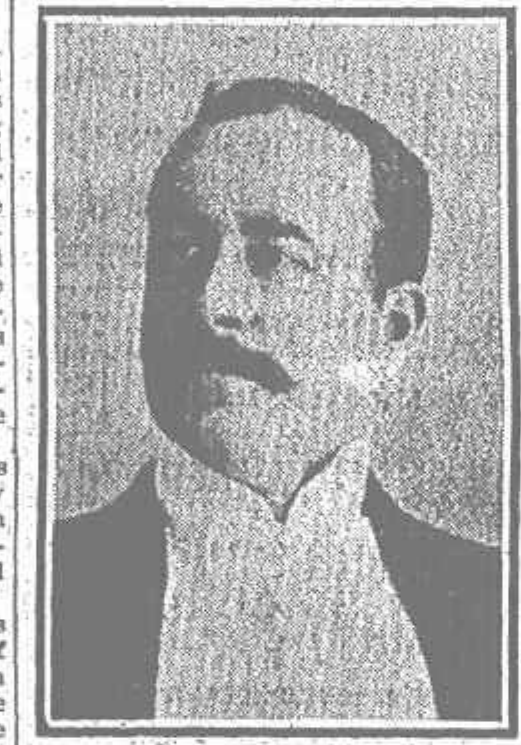
East of the factory a foundry will be erected, which will be 40x100 feet, all of the casting will be done here. A representative of one of the largest steel construction companies of Pittsburgh who was in that city today said, after looking over the plans, that the factory will undoubtedly be the most beautiful of any in the world. The street railroad company will run a special line to the factory and will take all express to and from Binghamton, connecting with the express companies here.

About 100 men will be employed in the factory at the time of opening and this number will be increased until, eventually, about 500 will be at work. There are now a few men employed by the Bundy Company and these will be taken to Endicott. The other employees will all be from out of town. Only the most skilful men will be employed.

There is said to be only one other company in the world that makes an adding machine that is of any value, and this is unable to keep within several months of the orders. While a few years ago they were used only in banks, they are now being adapted to all manufacturing establishments and offices.

Eight Years of Work.

After eight years of hard work and



**HARRY T. GOSS,**  
Who Assisted in Perfecting Bundy Adding Machine.

than the one touched—the correction key, to remedy a mistake if the wrong key is pressed, and the repeat key, which causes the printing of the number to be repeated.

**Several Styles of Machines.**

One style of this machine will permit of its being operated by foot power, thus giving the use of both hands, for operating the keys, arranging papers, etc., and probably still another mode of operation will be by electric motor.

A numbering attachment will keep count of the numbers of items listed, and can be instantly thrown out of action, if desired, in making corrections.

There are many other improvements which a personal examination and use of the machine will reveal. Altogether it is a most wonderful piece of machinery, yet simple compared with its competitor, which has about 1,100 more parts.

When the Bundy Manufacturing Company sold its time recorder business to the I. T. R. Co. this adding machine was expressly reserved from the sale. There have been already some twenty patents issued to the

This adding machine has been my pet idea for the last eight years," said Mr. Bundy today, when interviewed by a Binghamton Press reporter, "and it is a matter of great satisfaction to me to know that my dream has become a reality. I have one other ambition in connection with this machine—to have it manufactured in the finest and best equipped works in the United States, and then to build up as large and extensive a sale as its merits richly deserve."

The Bundy adding machine is the invention of the combined genius of five skilled mechanics and inventors, each of whom during the past eight years has made improvements which

**Pea Coal**

We are receiving the brightest and best pea coal ever sold in this city. It comes from Pittston, and every ton guaranteed to suit.

**City Coal Company**  
Phones 285. 29 Clinton St.

**F. H. M'FARLAND**  
OPTICIAN

Sole Successor to the late Dr. S. F. M'Farland, Old Stand—16 Front St., Binghamton, N. Y.

Careful Testing of Eyes for Glasses My Specialty.

Hours—Week days, 9 to 4; Monday and Saturday evenings, 7 to 9, and appointments.

Tell him to go to  
**DUDLEY & FOSTER'S**  
and get a pair of solid Armored Cruiser school shoes.

There is in them fun for him and economy for you. The best school shoes a boy can wear.

\$2.00 and \$2.50.  
**MONEY SAVERS.**  
34 COURT STREET.

**T. B. FULLER**  
D. D. S.

Westcott Block  
Both 'Phones  
118 State Street  
Binghamton, N. Y.

**SEPTEMBER—THE R MONTH**

September opens the Oyster Season again. We are on deck with a fine line of Blue Points sold on the half shell, Selects and Counts, also Little Neck and Princess Bay Clams.

**THE DUNNING GROCERY CO.**  
Both 'Phones. 192 W. Street

## FAREWELL GIVEN YOUNG PEOPLE

Reception at First Congregational Church Parlors for Students Off for College.

In honor of the departure for college of five young people a reception was given last evening in the parlors of the First Congregational Church which was largely attended by their friends. Flags of the different colleges were used in the ornamentation of the parlors. Miss Winifred Farrington was in charge of the arrangements and the guests were received by the Misses Ethel Jenkins, Juliet Sheak and Frances Hill. Musical selections were rendered by Miss Winifred Williams and Mrs. Frances Mallory Harby, after which refreshments were served. The students in whose honor the reception was given are the Misses Ethel Jenkins, Frances Hill, Juliet Sheak, Susan Bean and Ray Moody.

**Special Sale No. 66.**

Another big sale on this week at the A. & P. Tea Co.'s. Among the bargain offerings are: 3 cans A. & P. Baked Beans 25c. 4 cans B. of B. Baked Beans 25c. A. & P. Corn 10c.—Toma—Corn 7c. Red Alaska Salmon 11c. Domestic Sardines 8c. Read their large adv. in this paper.—Adv.

**TABLETS PENCILS COMPOSITION BOOKS**

A general line of school supplies at wholesale and retail.

**Stephens & Company**  
85-87 State St.

**SCHOOL BOOKS**

HIGH SCHOOL TEXT BOOKS. We Have EVERY BOOK Needed for the Opening of the Schools on Tuesday Next.

Also Tablets, Composition Books, Drawing Materials, in fact everything a Student Needs. Many New Novels This Year.

**Walter R. Miller & Co.**  
170 Washington and 121 State Sts.

**UP TO DATE**

We all want to be, and why shouldn't we be, at least so far as furniture is concerned, for we have a store within easy reach, where the newest up-to-date Fall patterns in furniture are being displayed and where staggering high prices are unknown.

Where?

**CULHANE & GREEN**

**Lackawanna Railroad**

WHEN YOU WANT SCRANTON COAL BE SURE YOU GET THE GENUINE

**D. L. & W. SCRANTON COAL**

SOLD BY **CHARLES MCKINNEY**  
143 HENRY ST. BOTH 'PHONES

**Lackawanna Railroad**

**CRUSHED STONE**

Having recently completed and equipped the largest stone crushing plant in the State at our quarries at Nicholson, Pa., we can fill orders promptly with all sizes and in any quantity the trade demands at prices that defy competition for the best grade of crushed or building stone in the market.

Correspondence will receive Prompt Attention from

**NICHOLSON STONE CO.**  
Nicholson, Pa.  
Or 703 Connell Building, Scranton, Pa.

**Buy Canning Peaches Now**

and here. We have fine Crawfords, also plums. All the necessary materials for making chow chow and mixed pickles. We have the best stocked meat market in this section.

**Connelly's, 104-106 Court St.**

**Dependable Tickers**

We have a great variety of accurate-to-the-second watches to offer this Fall.

Stock includes all the reliable American makes and the best of Switzerland. All sizes, cases and kinds, both gold, filled and silver. Prices reasonable.

**Jud Newing**  
86 Court St.

**McMAHON WAGON CO.**

builders of *Pleasure Carriages and Business Wagons*

Their excellency of construction distinguish them from other makes, not alone for their style, but because

**THEY STAND THE RACKET**

**T. I. LACEY & SON**  
Architects  
STRONG BLOCK

**THE CATTERSON KINDS OF MEAT**

Are so much more tender, juicy, and life giving you will certainly become a permanent patron of ours should you give us a trial order.

We buy only the best grades of beef, pork, lamb, veal, etc., and customers get the benefit.

**ARTISTIC MEAT CUTTING**

Then, too, the meats that come to your house from this market are artistically cut. They look better and more appetizing and it costs you no more.

Can we book an order for you?

**CATTERSON'S MARKET**  
18 Court St. Both 'Phones.